



# 282

3 ) ( ) 282 , ( )  
 282 .  
 232, .434410.507 .434410.507  
 , Ø1,0; 1,5 1.  
 .434410.507 .

282-	4	14	1	1
: - ( )				
: -				
: 1-				
: 1 -				

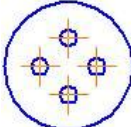

282-4/14 11- .434410.507

1,0	15
1,5	10
	2000
	6
	700
	500
	1000
	25

$\frac{m}{V} \text{ (g)}$	100-5000 2000 (200)	$\frac{m}{V} \text{ (g)}$	155
$\frac{m}{V} \text{ (g)}$	10000 (1000)	( )	60
			$1,34 \cdot 10^{-10} (1 \cdot 10^{-12})$

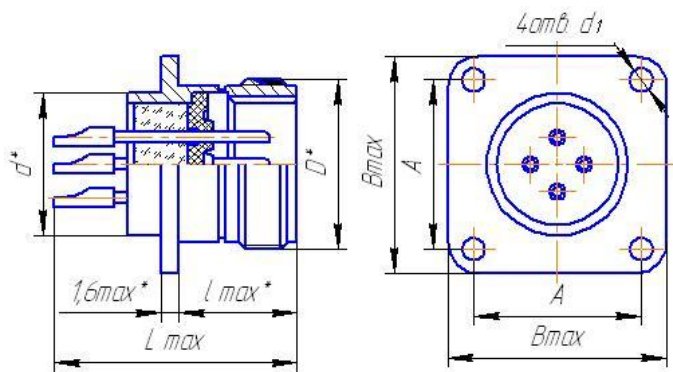
1000	200
3000	175
5000	165
7500	155
10000	150
15000	140
20000	135
25000	132
30000	128
40000	123
50000	119
80000	111
100000	108
130000	105
150000	101
200000	98

1

1	2	3	4	5	6	7	8	9	10
282	14			1,0	4	3	6	-	700

	18			1,5	7	6	12	-	700
	30			1,0	41	3	6	-	700

282



2.

	±0,1		D*	d*	d1		L *	L
					.	.		
14	16,5	21,7	17 1-6g	14,0	2,2	14	12,6	23,6
18	19,5	25,9	22 1-6g	18,0	3,2			
30	31,0	37,8	33 1-6g	30,0	3,2	+0,16	12,6	23,6